



# LIVESTOCK PRODUCTS AUSTRALIA

EMBARGO: 11:30AM (CANBERRA TIME) WED 10 NOV 1999

## SEPTEMBER QTR KEY FIGURES

TREND ESTIMATES	Sep Qtr 1998 '000	Jun Qtr 1999 '000	Sep Qtr 1999 '000
Number slaughtered			
Cattle	2 041.3	1 920.5	1 871.4
Calves	298.9	274.7	278.4
Sheep	3 657.7	3 628.6	3 722.4
Lambs	3 963.8	4 041.2	4 104.9
Pigs	1 312.2	1 271.5	1 247.4
Chickens	93 280.5	95 630.5	97 771.7

	Sep Qtr 1998 tonnes	Jun Qtr 1999 tonnes	Sep Qtr 1999 tonnes
Meat produced			
Beef	492 383	488 630	483 545
Veal	10 384	8 835	8 835
Mutton	75 980	76 218	78 543
Lamb	76 499	78 923	80 653
Pig meat	93 001	91 269	90 038
Chicken meat	140 871	143 689	146 806
Wool receivals	150 810	161 741	154 976

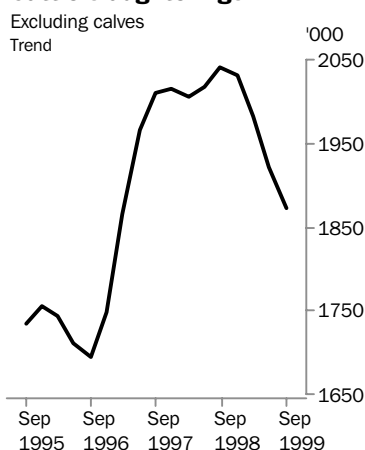
	Jun Qtr 1998 ML	Mar Qtr 1999 ML	Jun Qtr 1999 ML
Whole milk intake by factories	2 406	2 595	2 686

## SEPTEMBER QTR KEY POINTS

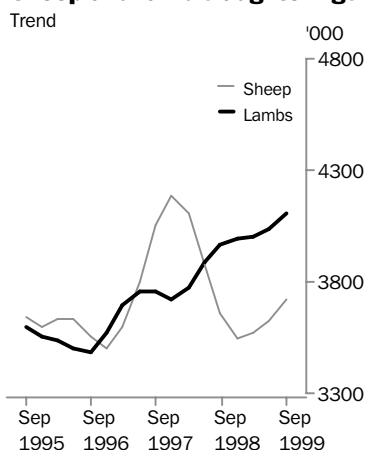
### TREND ESTIMATES

- The trend estimate for the number of lambs slaughtered in September quarter 1999 was 4.1 million, an increase of 2% on the June quarter estimate. This was the highest quarterly figure since December quarter 1990.
- The trend estimate for the number of sheep slaughtered was 3.7 million in September quarter 1999, an increase of 3% on June quarter 1999.
- The trend estimate for chicken meat production rose 2% to a record level of 147,000 tonnes in September quarter 1999.

### Cattle slaughtering



### Sheep and lamb slaughtering



■ For further information about these and related statistics, contact Nigel Gibson on Hobart 03 6222 5939, or Client Services in any ABS office as shown on the back cover of this publication.

# NOTES

## FORTHCOMING ISSUES

*ISSUE (Quarter)*

*RELEASE DATE*

December 1999

10 February 2000

March 2000

12 May 2000



## CHANGES IN THIS ISSUE

There are no changes in this issue.

## FORTHCOMING CHANGES

There are no forthcoming changes.

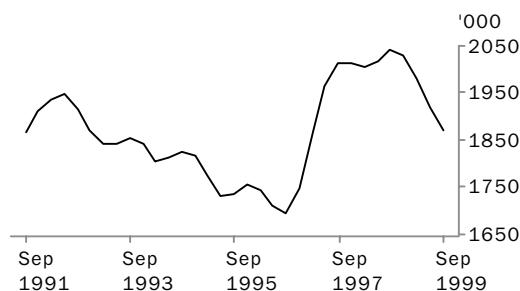


W. McLennan

Australian Statistician

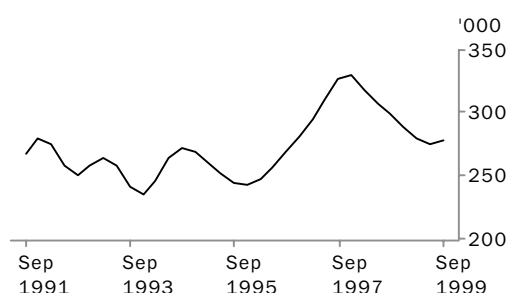
# LIVESTOCK SLAUGHTERED: Trend

## CATTLE (EXCLUDING CALVES)



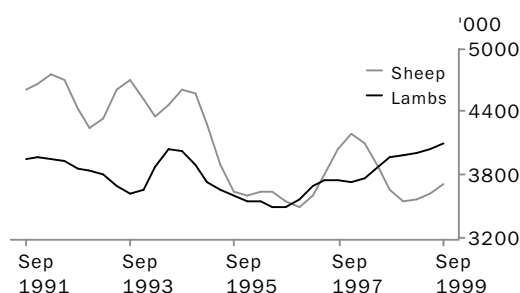
The trend estimate for cattle slaughterings fell 3% in September quarter 1999 to 1.9 million. This fall was largely due to producers continuing to retain large numbers of female cattle to rebuild herds.

## CALVES



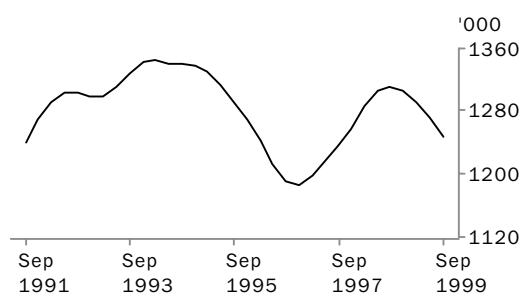
The trend estimate for calf slaughterings rose by 1% to 278,000 in September quarter 1999.

## SHEEP AND LAMBS



The trend estimate for sheep slaughterings increased by 3% in September quarter 1999 to 3.7 million. The trend estimate for lamb slaughterings rose 2% to 4.1 million.

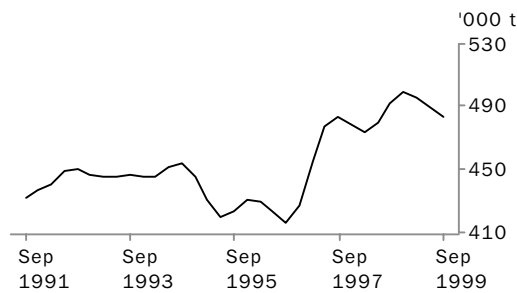
## PIGS



The trend estimate for pig slaughterings fell 2% in September quarter 1999 to 1.2 million. Increases in pig slaughterings are currently constrained by low sow numbers following the reduction in herd numbers throughout 1998.

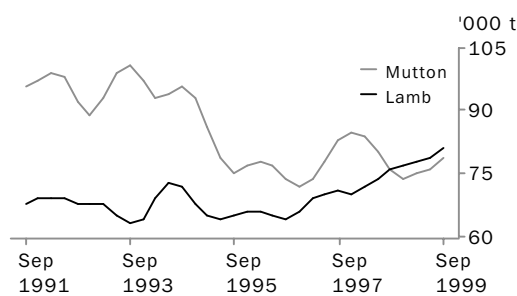
# MEAT PRODUCTION: Trend

## BEEF



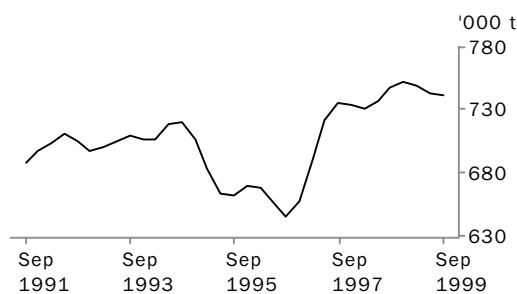
The trend estimate for beef production fell 1% in September quarter 1999 to 484,000 tonnes. A decline in the availability of cattle for slaughter was partially offset by higher slaughter weights.

## MUTTON AND LAMB



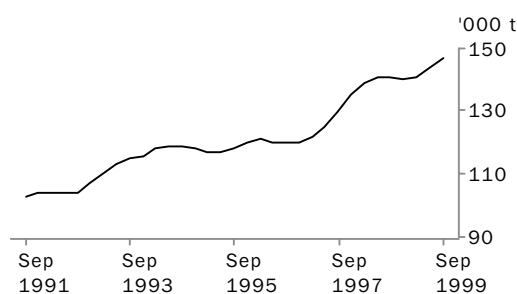
The trend estimate for mutton production increased by 3% in September quarter 1999 to 78,500 tonnes. The trend estimate for lamb production increased by 2% to 80,700 tonnes.

## TOTAL RED MEAT



The trend estimate for total red meat production fell slightly to 742,000 tonnes in September quarter 1999.

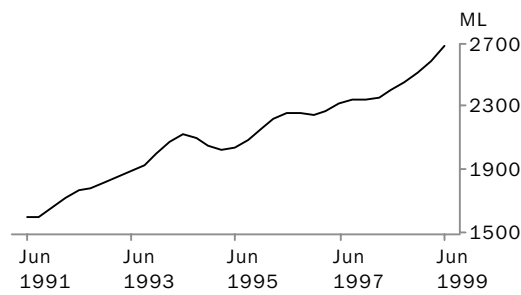
## CHICKEN MEAT



The trend estimate for chicken meat production rose 2% in September quarter 1999 to 147,000 tonnes. Continuing low grain prices and price competitiveness with beef and other meats contributed to the increase in chicken meat production.

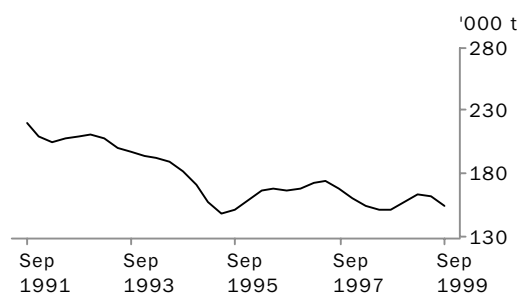
# LIVESTOCK PRODUCTS: Trend

WHOLE MILK INTAKE BY FACTORIES



The trend estimate for whole milk intake by factories rose by 4% in June quarter 1999 to 2.7 billion litres. Improved yields reflected excellent seasonal conditions in many dairying areas.

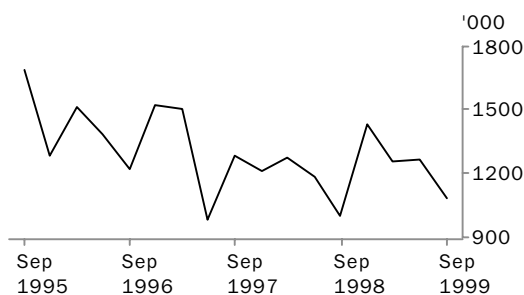
BROKERS AND DEALERS RECEIVALS OF TAXABLE WOOL



The trend estimate for wool receivals by brokers and dealers declined 4% in September quarter 1999 to 155,000 tonnes.

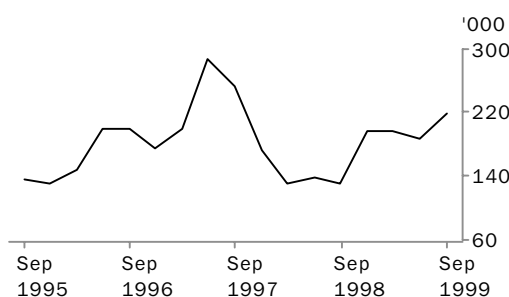
# LIVESTOCK EXPORTS: Original

EXPORTS OF LIVE SHEEP



Live sheep exports fell by 14% in September quarter 1999 to 1.1 million. The unit value (\$38.65) rose 10% from the previous quarter, while the gross value (\$42.0 million) fell by 5%. Declining sheep numbers and the continued cessation of live sheep purchases from Saudi Arabia contributed to the fall in live sheep exports.

EXPORTS OF LIVE CATTLE



Live cattle exports rose by 17% in September quarter 1999 to 220,000. The unit value (\$467.87) rose slightly while the gross value (\$103.0 million) rose by 18% over the previous quarter. Live cattle exports rose in response to increased demand from Egypt and a recovery in trade to South East Asia.

## LIVESTOCK SLAUGHTERED, Australia(a): All Series

Quarter	Bulls, bullocks and steers	Cows and heifers	Total cattle (excluding calves)	Calves	Sheep	Lambs	Pigs	Chickens
'000	'000	'000	'000	'000	'000	'000	'000	'000
ORIGINAL								
<b>1998</b>								
June	949.6	1 159.2	2 108.7	266.0	3 393.4	3 666.6	1 360.6	91 356.3
September	979.2	1 071.9	2 051.1	582.9	3 134.8	4 079.3	1 325.4	92 959.9
December	994.5	1 006.2	2 000.7	215.8	3 909.6	4 193.0	1 301.4	95 390.8
<b>1999</b>								
March	965.6	977.7	1 943.4	116.6	3 999.8	3 875.4	1 238.0	94 466.7
June	929.2	1 017.4	1 946.5	253.6	3 339.3	3 899.7	1 311.4	92 162.1
September	1 016.8	906.4	1 923.2	561.7	3 177.5	4 158.1	1 259.6	98 947.7
SEASONALLY ADJUSTED								
<b>1998</b>								
June	949.7	1 060.6	2 010.2	284.3	3 679.7	3 774.1	1 318.6	92 711.6
September	964.9	1 064.4	2 029.3	303.8	3 713.9	4 093.4	1 310.7	93 386.9
December	989.2	1 068.1	2 057.3	310.2	3 543.3	3 960.0	1 292.4	93 294.2
<b>1999</b>								
March	984.0	1 019.8	2 003.9	258.5	3 538.1	3 985.5	1 307.5	94 493.5
June	931.1	932.1	1 863.1	272.0	3 619.5	4 006.8	1 270.4	93 484.1
September	1 003.2	900.7	1 903.9	292.2	3 769.5	4 174.5	1 237.7	100 032.7
TREND ESTIMATES								
<b>1998</b>								
June	960.6	1 056.2	2 016.8	306.6	3 881.9	3 883.9	1 306.8	92 901.4
September	968.9	1 072.3	2 041.3	298.9	3 657.7	3 963.8	1 312.2	93 280.5
December	974.6	1 056.4	2 031.0	289.3	3 545.9	3 994.5	1 306.0	93 312.7
<b>1999</b>								
March	972.0	1 009.0	1 981.1	279.7	3 572.0	4 005.7	1 291.6	93 999.2
June	969.2	951.3	1 920.5	274.7	3 628.6	4 041.2	1 271.5	95 630.5
September	973.5	897.9	1 871.4	278.4	3 722.4	4 104.9	1 247.4	97 771.7

(a) For more information refer to paragraphs 5 to 9 of the Explanatory Notes.

## LIVESTOCK PRODUCTS, Australia(a): All Series

## RED MEAT.....

Quarter	Beef	Veal	Mutton	Lamb	Pig meat	Total red meat	Chicken meat	Whole milk intake by factories	Brokers and dealers receipts of taxable wool
	tonnes	tonnes	tonnes	tonnes	tonnes	tonnes	tonnes	ML	tonnes
ORIGINAL									
<b>1998</b>									
June	490 422	10 892	67 096	70 150	97 729	736 289	138 549	1 606	106 331
September	496 234	15 746	65 769	78 740	95 075	751 565	142 747	2 332	173 586
December	495 777	7 903	84 395	80 922	91 314	760 312	141 603	3 501	191 209
<b>1999</b>									
March	491 142	5 693	83 012	75 383	86 948	742 178	140 851	2 529	145 197
June	489 570	9 001	68 250	76 730	96 526	740 077	139 070	1 814	119 013
September	492 860	13 997	67 519	81 050	91 084	746 511	150 008	n.a.	168 074
SEASONALLY ADJUSTED									
<b>1998</b>									
June	476 967	10 959	74 479	71 967	92 746	727 118	140 811	2 410	153 295
September	492 394	10 228	77 867	79 638	93 025	753 152	141 765	2 526	147 670
December	502 589	10 234	74 680	76 498	92 284	756 285	138 833	2 463	156 226
<b>1999</b>									
March	502 035	8 196	73 819	77 107	93 026	754 183	142 569	2 560	166 057
June	476 574	9 069	75 736	78 505	91 573	731 457	141 155	2 767	171 012
September	489 595	9 083	80 028	82 048	89 091	749 845	149 256	n.a.	143 347
TREND									
<b>1998</b>									
June	479 695	10 970	79 595	74 432	92 292	736 984	140 904	2 406	150 988
September	492 383	10 384	75 980	76 499	93 001	748 247	140 871	2 456	150 810
December	498 872	9 618	74 322	77 367	92 972	753 151	140 412	2 517	158 267
<b>1999</b>									
March	495 521	9 058	74 952	77 827	92 345	749 703	141 278	2 595	163 275
June	488 630	8 835	76 218	78 923	91 269	743 875	143 689	2 686	161 741
September	483 545	8 835	78 543	80 653	90 038	741 614	146 806	n.a.	154 976

(a) For more information refer to paragraphs 5 to 9 and 14 to 16 of the Explanatory Notes.



## NUMBER OF LIVESTOCK SLAUGHTERED(a), Bulls, Bullocks and Steers: All Series

	<i>New South Wales</i>	<i>Victoria</i>	<i>Queensland</i>	<i>South Australia</i>	<i>Western Australia</i>	<i>Tasmania</i>	<i>Australia</i>
<i>Quarter</i>	'000	'000	'000	'000	'000	'000	'000
ORIGINAL							
<b>1998</b>							
June	214.4	212.5	414.1	35.5	45.3	23.8	949.6
September	209.7	192.0	472.5	29.7	45.1	20.9	979.2
December	198.1	229.6	440.3	35.4	66.6	22.4	994.5
<b>1999</b>							
March	200.6	236.2	431.7	27.9	45.9	23.0	965.6
June	172.8	191.9	463.1	30.1	40.3	28.5	929.2
September	194.6	172.6	538.0	36.2	42.2	26.5	1 016.8
SEASONALLY ADJUSTED							
<b>1998</b>							
June	217.0	218.9	399.5	37.8	50.7	22.9	949.7
September	211.8	217.3	415.5	37.1	51.8	25.9	964.9
December	197.9	222.3	463.4	29.8	53.1	22.5	989.2
<b>1999</b>							
March	196.2	213.6	491.2	26.1	46.9	19.8	984.0
June	175.4	198.0	448.4	31.9	45.0	27.6	931.1
September	196.8	195.6	474.1	45.3	48.5	32.7	1 003.2
TREND ESTIMATES							
<b>1998</b>							
June	218.6	219.5	405.3	39.4	49.9	23.4	960.6
September	209.4	220.5	426.5	34.8	51.9	23.5	968.9
December	199.4	218.0	455.4	29.7	50.9	22.5	974.6
<b>1999</b>							
March	191.3	211.6	470.3	29.4	48.4	23.2	972.0
June	187.2	202.5	470.8	33.6	46.7	26.5	969.2
September	187.5	194.6	466.3	39.8	46.3	30.8	973.5

(a) For more information refer to paragraph 6 of the Explanatory Notes.

## NUMBER OF LIVESTOCK SLAUGHTERED(a), Cows and Heifers: All Series

	<i>New South Wales</i>	<i>Victoria</i>	<i>Queensland</i>	<i>South Australia</i>	<i>Western Australia</i>	<i>Tasmania</i>	<i>Australia</i>
<i>Quarter</i>	'000	'000	'000	'000	'000	'000	'000
ORIGINAL							
<b>1998</b>							
June	338.0	239.6	409.9	53.1	56.4	40.3	1 159.2
September	284.3	229.0	407.0	40.3	60.6	23.9	1 071.9
December	274.3	251.9	339.0	41.4	65.6	28.0	1 006.2
<b>1999</b>							
March	282.2	226.9	337.5	38.2	61.0	30.9	977.7
June	273.0	196.9	415.2	34.7	53.6	33.5	1 017.4
September	245.1	179.2	356.2	34.9	54.0	21.4	906.4
SEASONALLY ADJUSTED							
<b>1998</b>							
June	315.6	233.2	353.7	50.4	66.9	32.3	1 060.6
September	295.5	251.4	361.2	44.7	65.2	33.7	1 064.4
December	285.5	244.1	407.0	41.8	59.7	29.2	1 068.1
<b>1999</b>							
March	283.8	220.1	382.4	36.4	54.1	28.5	1 019.8
June	254.6	192.1	359.0	32.8	63.4	26.8	932.1
September	253.0	196.7	316.6	38.7	58.1	30.1	900.7
TREND ESTIMATES							
<b>1998</b>							
June	300.9	238.7	356.5	47.2	67.0	32.4	1 056.2
September	300.0	246.1	374.6	45.6	64.1	32.1	1 072.3
December	289.8	239.2	389.2	40.9	59.9	30.2	1 056.4
<b>1999</b>							
March	275.3	220.5	381.6	37.0	58.5	28.5	1 009.0
June	262.7	202.0	356.8	35.5	58.9	28.1	951.3
September	251.2	190.6	325.9	35.7	59.8	28.7	897.9

(a) For more information refer to paragraph 6 of the Explanatory Notes.

## NUMBER OF LIVESTOCK SLAUGHTERED(a), Total Cattle (excluding Calves): All Series

	<i>New South Wales</i>	<i>Victoria</i>	<i>Queensland</i>	<i>South Australia</i>	<i>Western Australia</i>	<i>Tasmania</i>	<i>Australia</i>
<i>Quarter</i>	'000	'000	'000	'000	'000	'000	'000
ORIGINAL							
<b>1998</b>							
June	552.4	452.1	824.0	88.5	101.7	64.1	2 108.7
September	493.9	421.0	879.5	70.0	105.7	44.8	2 051.1
December	472.4	481.4	779.3	76.9	132.3	50.4	2 000.7
<b>1999</b>							
March	482.8	463.1	769.2	66.1	106.9	53.9	1 943.4
June	445.7	388.7	878.2	64.9	93.9	62.0	1 946.5
September	439.7	351.8	894.2	71.1	96.1	47.8	1 923.2
SEASONALLY ADJUSTED							
<b>1998</b>							
June	532.6	452.0	753.2	88.2	117.6	55.2	2 010.2
September	507.3	468.7	776.7	81.7	117.0	59.6	2 029.3
December	483.4	466.4	870.4	71.6	112.8	51.7	2 057.3
<b>1999</b>							
March	480.0	433.7	873.5	62.4	100.9	48.3	2 003.9
June	430.0	390.1	807.4	64.7	108.4	54.4	1 863.1
September	449.8	392.3	790.7	84.0	106.6	62.8	1 903.9
TREND ESTIMATES							
<b>1998</b>							
June	519.6	458.3	761.8	86.6	116.9	55.8	2 016.8
September	509.3	466.6	801.1	80.5	116.1	55.6	2 041.3
December	489.3	457.2	844.6	70.7	110.8	52.7	2 031.0
<b>1999</b>							
March	466.6	432.0	851.9	66.3	106.8	51.7	1 981.1
June	450.0	404.5	827.7	69.1	105.6	54.6	1 920.5
September	438.7	385.2	792.2	75.5	106.0	59.5	1 871.4

(a) For more information refer to paragraph 6 of the Explanatory Notes.

## NUMBER OF LIVESTOCK SLAUGHTERED(a), Calves: All Series

	<i>New South Wales</i>	<i>Victoria</i>	<i>Queensland</i>	<i>South Australia</i>	<i>Western Australia</i>	<i>Tasmania</i>	<i>Australia</i>
<i>Quarter</i>	'000	'000	'000	'000	'000	'000	'000
ORIGINAL							
<b>1998</b>							
June	84.2	140.4	27.8	7.0	1.3	5.1	266.0
September	64.7	436.3	27.6	5.5	1.5	47.0	582.9
December	60.9	115.0	25.7	3.8	1.6	8.7	215.8
<b>1999</b>							
March	56.1	26.9	26.2	4.9	1.6	0.8	116.6
June	61.0	146.9	33.4	5.8	1.8	4.5	253.6
September	51.3	412.2	33.5	6.2	2.3	56.1	561.7
SEASONALLY ADJUSTED							
<b>1998</b>							
June	79.5	153.7	26.3	5.4	1.4	16.2	284.3
September	61.0	185.6	26.7	4.6	1.3	15.9	303.8
December	69.0	197.7	27.4	5.1	1.5	13.0	310.2
<b>1999</b>							
March	56.2	172.7	26.8	6.4	1.6	15.0	258.5
June	57.5	162.3	31.6	4.4	2.0	13.9	272.0
September	48.3	174.9	32.4	5.2	2.1	19.1	292.2
TREND ESTIMATES							
<b>1998</b>							
June	73.5	191.0	27.7	4.9	1.5	16.6	306.6
September	68.5	182.5	26.7	5.1	1.4	15.2	298.9
December	63.8	180.9	26.7	5.3	1.5	14.0	289.3
<b>1999</b>							
March	59.4	178.8	28.4	5.4	1.7	14.2	279.7
June	55.1	170.0	30.4	5.3	1.9	15.5	274.7
September	49.7	166.5	32.5	5.0	2.1	17.3	278.4

(a) For more information refer to paragraph 6 of the Explanatory Notes.

## NUMBER OF LIVESTOCK SLAUGHTERED(a), Sheep: All Series

	<i>New South Wales</i>	<i>Victoria</i>	<i>Queensland</i>	<i>South Australia</i>	<i>Western Australia</i>	<i>Tasmania</i>	<i>Australia</i>
<i>Quarter</i>	'000	'000	'000	'000	'000	'000	'000
ORIGINAL							
<b>1998</b>							
June	1 326.5	655.8	289.2	496.5	526.3	99.1	3 393.4
September	1 317.3	627.2	319.8	425.4	390.1	55.0	3 134.8
December	1 506.6	819.6	317.7	642.4	505.2	118.0	3 909.6
<b>1999</b>							
March	1 445.6	867.2	358.2	591.9	580.7	156.3	3 999.8
June	1 313.1	756.9	338.1	358.6	462.0	110.5	3 339.3
September	1 320.1	723.3	402.4	239.3	407.0	85.4	3 177.5
SEASONALLY ADJUSTED							
<b>1998</b>							
June	1 375.3	788.2	310.8	603.9	582.9	96.2	3 679.7
September	1 464.9	796.8	314.3	584.4	446.4	99.4	3 713.9
December	1 436.5	698.7	319.5	542.2	440.4	112.8	3 543.3
<b>1999</b>							
March	1 328.5	718.9	338.0	466.8	540.1	113.4	3 538.1
June	1 362.3	906.9	365.2	438.4	510.1	108.8	3 619.5
September	1 471.1	915.3	396.4	329.8	466.2	154.7	3 769.5
TREND ESTIMATES							
<b>1998</b>							
June	1 459.5	811.4	323.7	631.2	567.3	103.3	3 881.9
September	1 429.0	756.2	314.0	584.1	485.1	102.3	3 657.7
December	1 397.3	728.9	319.5	532.4	467.9	105.1	3 545.9
<b>1999</b>							
March	1 378.9	769.8	340.7	479.7	493.8	112.8	3 572.0
June	1 383.0	846.1	365.6	415.4	505.1	123.9	3 628.6
September	1 419.4	929.3	390.3	358.8	494.3	137.6	3 722.4

(a) For more information refer to paragraph 6 of the Explanatory Notes.

## NUMBER OF LIVESTOCK SLAUGHTERED(a), Lambs: All Series

	<i>New South Wales</i>	<i>Victoria</i>	<i>Queensland</i>	<i>South Australia</i>	<i>Western Australia</i>	<i>Tasmania</i>	<i>Australia</i>
<i>Quarter</i>	'000	'000	'000	'000	'000	'000	'000
ORIGINAL							
<b>1998</b>							
June	885.4	1 510.9	184.8	531.8	423.9	129.8	3 666.6
September	1 013.4	1 744.9	200.0	529.1	477.8	114.1	4 079.3
December	975.4	1 784.3	184.1	531.6	614.4	103.3	4 193.0
<b>1999</b>							
March	913.0	1 667.2	187.2	494.4	478.7	134.9	3 875.4
June	981.4	1 501.0	185.4	598.4	505.5	127.9	3 899.7
September	1 011.7	1 687.7	226.1	568.8	553.4	110.4	4 158.1
SEASONALLY ADJUSTED							
<b>1998</b>							
June	904.4	1 596.6	186.9	507.7	427.0	115.5	3 774.1
September	963.2	1 786.9	184.9	585.1	461.5	141.2	4 093.4
December	973.0	1 634.0	194.9	501.4	551.6	113.1	3 960.0
<b>1999</b>							
March	945.2	1 689.7	189.5	501.2	557.1	116.6	3 985.5
June	1 002.8	1 589.7	188.4	569.0	510.1	113.9	4 006.8
September	960.9	1 730.5	208.8	630.5	533.3	137.0	4 174.5
TREND ESTIMATES							
<b>1998</b>							
June	936.4	1 663.0	187.4	536.2	438.5	110.5	3 883.9
September	945.2	1 695.1	189.1	536.7	478.8	113.4	3 963.8
December	962.5	1 684.5	188.8	522.2	524.6	113.2	3 994.5
<b>1999</b>							
March	972.1	1 658.0	191.0	527.5	541.9	115.1	4 005.7
June	974.0	1 652.1	195.1	561.5	535.5	121.3	4 041.2
September	975.1	1 679.9	200.5	610.9	523.9	128.3	4 104.9

(a) For more information refer to paragraph 6 of the Explanatory Notes.

## NUMBER OF LIVESTOCK SLAUGHTERED(a), Pigs: All Series

	<i>New South Wales</i>	<i>Victoria</i>	<i>Queensland</i>	<i>South Australia</i>	<i>Western Australia</i>	<i>Tasmania</i>	<i>Australia</i>
<i>Quarter</i>	'000	'000	'000	'000	'000	'000	'000
ORIGINAL							
<b>1998</b>							
June	365.7	433.9	274.0	115.8	147.9	21.4	1 360.6
September	331.0	427.2	298.0	101.2	144.6	21.2	1 325.4
December	349.2	404.0	281.0	110.4	135.1	19.5	1 301.4
<b>1999</b>							
March	331.5	346.7	263.7	126.0	150.3	18.4	1 238.0
June	335.5	394.9	289.6	128.3	138.8	22.1	1 311.4
September	331.2	378.9	269.7	113.5	143.6	20.0	1 259.6
SEASONALLY ADJUSTED							
<b>1998</b>							
June	359.1	418.0	264.9	113.5	140.3	20.3	1 318.6
September	328.2	421.6	298.7	96.1	142.8	21.8	1 310.7
December	338.4	393.1	283.7	116.3	142.4	18.8	1 292.4
<b>1999</b>							
March	351.1	380.2	271.8	129.5	152.4	19.7	1 307.5
June	329.6	379.8	280.0	125.4	131.7	21.0	1 270.4
September	331.7	365.2	268.3	108.1	142.8	20.1	1 237.7
TREND ESTIMATES							
<b>1998</b>							
June	346.0	414.5	279.9	104.7	140.1	20.3	1 306.8
September	341.8	413.5	284.1	107.8	143.4	20.4	1 312.2
December	339.7	399.7	284.5	115.9	144.9	20.1	1 306.0
<b>1999</b>							
March	339.5	384.7	279.4	122.6	143.6	19.9	1 291.6
June	337.1	374.7	273.6	122.5	141.1	20.2	1 271.5
September	331.0	367.8	271.2	116.0	138.7	20.6	1 247.4

(a) For more information refer to paragraph 6 of the Explanatory Notes.

## NUMBER OF CHICKENS SLAUGHTERED(a): All Series

	<i>New South Wales</i>	<i>Victoria</i>	<i>Queensland</i>	<i>South Australia</i>	<i>Western Australia</i>	<i>Australia</i>
<i>Quarter</i>	'000	'000	'000	'000	'000	'000
ORIGINAL						
<b>1998</b>						
June	33 805.5	23 738.6	16 292.1	n.p.	n.p.	91 356.3
September	36 538.9	23 062.6	15 975.5	n.p.	n.p.	92 959.9
December	35 911.0	24 402.2	16 882.5	n.p.	n.p.	95 390.8
<b>1999</b>						
March	35 774.0	23 560.8	16 760.1	n.p.	n.p.	94 466.7
June	32 570.1	24 517.7	16 371.5	n.p.	n.p.	92 162.1
September	32 171.0	25 692.8	20 850.0	n.p.	n.p.	98 947.7
SEASONALLY ADJUSTED						
<b>1998</b>						
June	34 472.7	23 683.4	16 758.9	n.p.	n.p.	92 711.6
September	35 857.6	23 904.9	16 004.8	n.p.	n.p.	93 386.9
December	35 563.6	23 632.8	16 412.6	n.p.	n.p.	93 294.2
<b>1999</b>						
March	35 809.3	23 562.6	16 756.5	n.p.	n.p.	94 493.5
June	33 210.7	24 457.0	16 813.9	n.p.	n.p.	93 484.1
September	31 985.5	26 600.3	20 887.6	n.p.	n.p.	100 032.7
TREND ESTIMATES						
<b>1998</b>						
June	34 663.8	23 869.0	16 548.0	n.p.	n.p.	92 901.4
September	35 488.0	23 752.4	16 359.8	n.p.	n.p.	93 280.5
December	35 840.8	23 553.6	16 153.0	n.p.	n.p.	93 312.7
<b>1999</b>						
March	35 023.5	23 904.4	16 711.2	n.p.	n.p.	93 999.2
June	33 653.3	24 775.0	17 963.8	n.p.	n.p.	95 630.5
September	32 174.8	25 908.1	19 523.0	n.p.	n.p.	97 771.7

(a) For more information refer to paragraphs 8 and 9 of the Explanatory Notes.



## NUMBER OF LIVESTOCK SLAUGHTERED(a): Original

	New South Wales	Victoria	Queensland	South Australia	Western Australia	Tasmania	Australia
Finacial year	'000	'000	'000	'000	'000	'000	'000
<b>BULLS, BULLOCKS AND STEERS</b>							
<b>1996-1997</b>	1 073.3	898.7	1 509.3	171.1	192.3	109.4	<b>3 967.7</b>
<b>1997-1998</b>	956.5	901.4	1 660.9	169.6	196.0	93.4	<b>3 993.6</b>
<b>1998-1999</b>	781.1	849.7	1 807.6	123.1	197.9	94.8	<b>3 868.5</b>
<b>COWS AND HEIFERS</b>							
<b>1996-1997</b>	966.9	777.2	1 008.5	197.6	214.5	93.2	<b>3 302.8</b>
<b>1997-1998</b>	1 182.2	896.6	1 353.7	202.8	252.1	123.6	<b>4 058.2</b>
<b>1998-1999</b>	1 113.7	904.6	1 498.7	154.7	240.8	116.3	<b>4 073.2</b>
<b>TOTAL CATTLE (excluding calves)</b>							
<b>1996-1997</b>	2 040.2	1 675.9	2 517.9	368.7	406.8	202.6	<b>7 270.5</b>
<b>1997-1998</b>	2 138.7	1 798.0	3 014.6	372.4	448.1	217.0	<b>8 051.8</b>
<b>1998-1999</b>	1 894.8	1 754.3	3 306.3	277.8	438.7	211.1	<b>7 941.7</b>
<b>CALVES</b>							
<b>1996-1997</b>	257.4	697.3	120.9	15.7	5.6	43.5	<b>1 141.2</b>
<b>1997-1998</b>	306.3	767.2	114.9	20.2	5.6	53.9	<b>1 268.8</b>
<b>1998-1999</b>	242.7	725.1	112.8	20.0	6.4	61.0	<b>1 168.8</b>
<b>SHEEP</b>							
<b>1996-1997</b>	5 241.3	2 806.6	977.3	2 311.8	2 635.2	367.7	<b>14 339.9</b>
<b>1997-1998</b>	5 902.7	3 285.6	1 277.1	2 655.0	2 717.4	461.0	<b>16 298.8</b>
<b>1998-1999</b>	5 582.6	3 070.9	1 333.8	2 018.3	1 938.0	439.9	<b>14 383.4</b>
<b>LAMBS</b>							
<b>1996-1997</b>	3 621.4	5 978.9	785.1	1 754.0	2 081.2	358.2	<b>14 578.7</b>
<b>1997-1998</b>	3 656.9	6 385.7	765.7	1 865.8	1 856.5	423.3	<b>14 953.8</b>
<b>1998-1999</b>	3 883.2	6 697.5	756.7	2 153.5	2 076.4	480.1	<b>16 047.5</b>
<b>PIGS</b>							
<b>1996-1997</b>	1 338.4	1 397.2	1 002.3	427.4	550.2	73.3	<b>4 795.6</b>
<b>1997-1998</b>	1 392.0	1 567.7	1 082.7	413.8	550.0	78.1	<b>5 091.3</b>
<b>1998-1999</b>	1 347.1	1 572.8	1 132.4	465.8	568.7	81.2	<b>5 176.3</b>
<b>CHICKENS</b>							
<b>1996-1997</b>	133 363.7	82 086.9	61 088.9	28 008.1	36 360.2	n.p.	<b>340 907.8</b>
<b>1997-1998</b>	135 651.5	92 935.0	66 129.8	32 712.8	36 804.6	n.p.	<b>364 233.7</b>
<b>1998-1999</b>	140 794.0	95 543.3	65 989.7	33 536.7	39 115.8	n.p.	<b>374 979.5</b>

(a) For more information refer to paragraphs 5 to 9 of the Explanatory Notes.

## RED MEAT PRODUCED(a), Beef: All Series

	<i>New South Wales</i>	<i>Victoria</i>	<i>Queensland</i>	<i>South Australia</i>	<i>Western Australia</i>	<i>Tasmania</i>	<i>Australia</i>
<i>Quarter</i>	<i>tonnes</i>	<i>tonnes</i>	<i>tonnes</i>	<i>tonnes</i>	<i>tonnes</i>	<i>tonnes</i>	<i>tonnes</i>
ORIGINAL							
<b>1998</b>							
June	118 412	95 840	214 887	18 786	22 557	14 875	490 422
September	110 033	93 581	235 415	15 160	24 727	10 607	496 234
December	108 096	109 256	213 671	17 609	32 820	12 894	495 777
<b>1999</b>							
March	114 429	107 026	215 072	14 780	25 840	13 699	491 142
June	105 265	88 812	240 345	14 717	21 592	16 072	489 570
September	105 982	79 388	250 913	16 871	22 568	12 889	492 860
SEASONALLY ADJUSTED							
<b>1998</b>							
June	116 470	98 464	200 570	18 818	26 765	13 205	476 967
September	113 013	103 299	208 744	18 509	27 626	14 203	492 394
December	109 047	104 914	234 048	15 956	28 018	12 876	502 589
<b>1999</b>							
March	112 177	99 094	241 744	13 745	23 882	12 185	502 035
June	103 765	91 397	224 771	14 660	25 638	14 264	476 574
September	109 056	87 549	222 725	20 583	25 261	17 205	489 595
TREND ESTIMATES							
<b>1998</b>							
June	114 879	100 097	201 664	18 907	26 871	13 368	479 695
September	113 055	103 044	214 677	17 754	27 432	13 371	492 383
December	110 887	102 946	229 151	15 667	26 784	12 914	498 872
<b>1999</b>							
March	108 819	98 724	234 096	14 876	25 701	13 144	495 521
June	107 621	92 824	230 543	15 969	25 070	14 403	488 630
September	107 121	88 262	223 350	17 961	24 944	16 124	483 545

(a) For more information refer to paragraph 6 of the Explanatory Notes.

## RED MEAT PRODUCED(a), Veal: All Series

	<i>New South Wales</i>	<i>Victoria</i>	<i>Queensland</i>	<i>South Australia</i>	<i>Western Australia</i>	<i>Tasmania</i>	<i>Australia</i>
<i>Quarter</i>	<i>tonnes</i>	<i>tonnes</i>	<i>tonnes</i>	<i>tonnes</i>	<i>tonnes</i>	<i>tonnes</i>	<i>tonnes</i>
ORIGINAL							
<b>1998</b>							
June	6 137	2 870	1 449	235	73	115	10 892
September	4 613	8 519	1 407	170	91	934	15 746
December	3 775	2 397	1 308	127	104	181	7 903
<b>1999</b>							
March	3 416	635	1 344	153	108	25	5 693
June	3 830	2 895	1 869	161	133	101	9 001
September	3 086	8 043	1 424	160	180	1 090	13 997
SEASONALLY ADJUSTED							
<b>1998</b>							
June	5 645	3 148	1 380	194	82	312	10 959
September	4 380	3 780	1 387	145	80	332	10 228
December	4 378	3 829	1 406	158	98	249	10 234
<b>1999</b>							
March	3 431	3 037	1 337	188	119	269	8 196
June	3 509	3 209	1 777	132	148	269	9 069
September	2 933	3 555	1 408	136	160	389	9 083
TREND ESTIMATES							
<b>1998</b>							
June	5 220	3 681	1 419	164	80	318	10 970
September	4 740	3 606	1 376	165	85	299	10 384
December	4 162	3 501	1 395	166	98	273	9 618
<b>1999</b>							
March	3 687	3 367	1 478	160	120	268	9 058
June	3 337	3 268	1 538	151	143	299	8 835
September	2 997	3 336	1 562	136	161	345	8 835

(a) For more information refer to paragraph 6 of the Explanatory Notes.

## RED MEAT PRODUCED(a), Mutton: All Series

	<i>New South Wales</i>	<i>Victoria</i>	<i>Queensland</i>	<i>South Australia</i>	<i>Western Australia</i>	<i>Tasmania</i>	<i>Australia</i>
<i>Quarter</i>	<i>tonnes</i>	<i>tonnes</i>	<i>tonnes</i>	<i>tonnes</i>	<i>tonnes</i>	<i>tonnes</i>	<i>tonnes</i>
ORIGINAL							
<b>1998</b>							
June	25 595	12 261	5 269	10 752	10 785	2 434	<b>67 096</b>
September	27 772	12 512	6 268	10 348	7 812	1 058	<b>65 769</b>
December	32 321	16 880	6 416	15 737	10 731	2 311	<b>84 395</b>
<b>1999</b>							
March	29 704	17 232	6 957	14 029	11 938	3 152	<b>83 012</b>
June	27 608	14 840	6 399	7 915	9 285	2 203	<b>68 250</b>
September	29 424	14 857	7 685	5 654	8 209	1 690	<b>67 519</b>
SEASONALLY ADJUSTED							
<b>1998</b>							
June	26 912	15 015	5 862	13 597	11 975	2 287	<b>74 479</b>
September	30 948	15 814	6 163	13 973	9 029	1 976	<b>77 867</b>
December	30 146	13 988	6 292	12 944	9 325	2 215	<b>74 680</b>
<b>1999</b>							
March	27 515	14 548	6 523	11 174	11 023	2 312	<b>73 819</b>
June	29 015	18 140	7 158	10 059	10 293	2 090	<b>75 736</b>
September	32 862	18 699	7 571	7 653	9 502	3 170	<b>80 028</b>
TREND ESTIMATES							
<b>1998</b>							
June	29 639	15 670	6 201	14 502	11 562	2 223	<b>79 595</b>
September	29 440	14 848	6 089	13 762	9 956	2 144	<b>75 980</b>
December	29 124	14 573	6 253	12 720	9 670	2 102	<b>74 322</b>
<b>1999</b>							
March	29 041	15 499	6 655	11 386	10 132	2 225	<b>74 952</b>
June	29 643	17 089	7 083	9 695	10 283	2 476	<b>76 218</b>
September	31 235	18 852	7 478	8 261	9 981	2 756	<b>78 543</b>

(a) For more information refer to paragraph 6 of the Explanatory Notes.

## RED MEAT PRODUCED(a), Lamb: All Series

	<i>New South Wales</i>	<i>Victoria</i>	<i>Queensland</i>	<i>South Australia</i>	<i>Western Australia</i>	<i>Tasmania</i>	<i>Australia</i>
<i>Quarter</i>	<i>tonnes</i>	<i>tonnes</i>	<i>tonnes</i>	<i>tonnes</i>	<i>tonnes</i>	<i>tonnes</i>	<i>tonnes</i>
ORIGINAL							
<b>1998</b>							
June	16 903	28 529	3 286	11 106	7 814	2 512	<b>70 150</b>
September	19 758	33 503	3 748	10 738	8 813	2 181	<b>78 740</b>
December	19 182	33 612	3 526	10 997	11 643	1 962	<b>80 922</b>
<b>1999</b>							
March	18 162	32 019	3 429	10 101	9 100	2 573	<b>75 383</b>
June	19 778	29 209	3 436	12 337	9 465	2 507	<b>76 730</b>
September	19 869	32 868	4 260	11 492	10 388	2 173	<b>81 050</b>
SEASONALLY ADJUSTED							
<b>1998</b>							
June	17 214	29 591	3 384	10 410	7 828	2 280	<b>71 967</b>
September	18 782	35 210	3 433	12 421	8 531	2 593	<b>79 638</b>
December	19 167	30 844	3 731	10 330	10 542	2 136	<b>76 498</b>
<b>1999</b>							
March	18 822	32 196	3 450	10 072	10 519	2 258	<b>77 107</b>
June	20 157	30 257	3 553	11 524	9 488	2 278	<b>78 505</b>
September	18 878	34 616	3 929	13 340	10 043	2 584	<b>82 048</b>
TREND ESTIMATES							
<b>1998</b>							
June	17 917	31 475	3 427	11 150	8 045	2 285	<b>74 432</b>
September	18 359	32 451	3 508	11 196	8 938	2 369	<b>76 499</b>
December	18 997	32 202	3 533	10 756	9 904	2 305	<b>77 367</b>
<b>1999</b>							
March	19 350	31 652	3 572	10 751	10 227	2 256	<b>77 827</b>
June	19 407	31 858	3 647	11 495	10 063	2 334	<b>78 923</b>
September	19 364	32 973	3 758	12 632	9 804	2 478	<b>80 653</b>

(a) For more information refer to paragraph 6 of the Explanatory Notes.

## RED MEAT PRODUCED(a), Pig Meat: All Series

	<i>New South Wales</i>	<i>Victoria</i>	<i>Queensland</i>	<i>South Australia</i>	<i>Western Australia</i>	<i>Tasmania</i>	<i>Australia</i>
<i>Quarter</i>	<i>tonnes</i>	<i>tonnes</i>	<i>tonnes</i>	<i>tonnes</i>	<i>tonnes</i>	<i>tonnes</i>	<i>tonnes</i>
ORIGINAL							
<b>1998</b>							
June	25 914	31 556	20 996	7 923	9 852	1 394	97 729
September	23 207	31 215	22 816	6 782	9 571	1 379	95 075
December	25 143	28 732	20 283	7 269	8 563	1 223	91 314
<b>1999</b>							
March	23 541	25 120	19 246	8 031	9 752	1 184	86 948
June	25 293	29 514	21 720	8 782	9 649	1 456	96 526
September	24 341	28 201	19 991	7 709	9 457	1 274	91 084
SEASONALLY ADJUSTED							
<b>1998</b>							
June	24 536	30 027	20 068	7 627	9 174	1 299	92 746
September	22 910	30 355	22 374	6 372	9 516	1 394	93 025
December	24 715	28 436	20 803	7 737	9 087	1 237	92 284
<b>1999</b>							
March	25 770	27 621	20 071	8 392	9 971	1 250	93 026
June	23 961	28 038	20 753	8 432	8 976	1 353	91 573
September	24 018	27 420	19 603	7 244	9 412	1 286	89 091
TREND ESTIMATES							
<b>1998</b>							
June	23 939	29 828	21 067	7 064	9 049	1 303	92 292
September	24 053	29 802	21 215	7 168	9 346	1 311	93 001
December	24 510	28 863	21 070	7 626	9 479	1 296	92 972
<b>1999</b>							
March	24 807	28 045	20 606	8 089	9 440	1 282	92 345
June	24 607	27 654	20 152	8 140	9 373	1 294	91 269
September	24 024	27 543	19 944	7 770	9 320	1 316	90 038

(a) For more information refer to paragraph 6 of the Explanatory Notes.

## TOTAL RED MEAT PRODUCED(a): All Series

	<i>New South Wales</i>	<i>Victoria</i>	<i>Queensland</i>	<i>South Australia</i>	<i>Western Australia</i>	<i>Tasmania</i>	<i>Australia</i>
<i>Quarter</i>	<i>tonnes</i>	<i>tonnes</i>	<i>tonnes</i>	<i>tonnes</i>	<i>tonnes</i>	<i>tonnes</i>	<i>tonnes</i>
ORIGINAL							
<b>1998</b>							
June	192 961	171 056	245 887	48 802	51 080	21 331	<b>736 289</b>
September	185 383	179 330	269 654	43 198	51 014	16 158	<b>751 565</b>
December	188 516	190 877	245 203	51 739	63 861	18 570	<b>760 312</b>
<b>1999</b>							
March	189 252	182 031	246 049	47 094	56 737	20 634	<b>742 178</b>
June	181 774	165 270	273 769	43 912	50 124	22 339	<b>740 077</b>
September	182 701	163 358	284 274	41 886	50 802	19 117	<b>746 511</b>
SEASONALLY ADJUSTED							
<b>1998</b>							
June	190 777	176 245	231 264	50 646	55 824	19 383	<b>727 118</b>
September	190 033	188 458	242 101	51 420	54 782	20 498	<b>753 152</b>
December	187 453	182 011	266 280	47 125	57 070	18 713	<b>756 285</b>
<b>1999</b>							
March	187 715	176 496	273 125	43 571	55 514	18 274	<b>754 183</b>
June	180 407	171 041	258 012	44 807	54 543	20 254	<b>731 457</b>
September	187 747	171 839	255 236	48 956	54 378	24 634	<b>749 845</b>
TREND ESTIMATES							
<b>1998</b>							
June	191 594	180 751	233 778	51 787	55 607	19 497	<b>736 984</b>
September	189 647	183 751	246 865	50 045	55 757	19 494	<b>748 247</b>
December	187 680	182 085	261 402	46 935	55 935	18 890	<b>753 151</b>
<b>1999</b>							
March	185 704	177 287	266 407	45 262	55 620	19 175	<b>749 703</b>
June	184 615	172 693	262 963	45 450	54 932	20 806	<b>743 875</b>
September	184 741	170 966	256 092	46 760	54 210	23 019	<b>741 614</b>

(a) For more information refer to paragraph 6 of the Explanatory Notes.

## CHICKEN MEAT PRODUCED(a): All Series

	<i>New South Wales</i>	<i>Victoria</i>	<i>Queensland</i>	<i>South Australia</i>	<i>Western Australia</i>	<i>Australia</i>
<i>Quarter</i>	<i>tonnes</i>	<i>tonnes</i>	<i>tonnes</i>	<i>tonnes</i>	<i>tonnes</i>	<i>tonnes</i>
ORIGINAL						
<b>1998</b>						
June	53 773	38 458	21 934	n.p.	n.p.	138 549
September	59 616	37 750	21 043	n.p.	n.p.	142 747
December	55 381	39 256	22 151	n.p.	n.p.	141 603
<b>1999</b>						
March	56 024	38 033	22 248	n.p.	n.p.	140 851
June	52 201	38 562	22 645	n.p.	n.p.	139 070
September	50 735	40 287	31 015	n.p.	n.p.	150 008
SEASONALLY ADJUSTED						
<b>1998</b>						
June	54 289	39 689	22 287	n.p.	n.p.	140 811
September	58 216	37 676	21 113	n.p.	n.p.	141 765
December	55 201	37 879	21 600	n.p.	n.p.	138 833
<b>1999</b>						
March	57 184	38 313	22 408	n.p.	n.p.	142 569
June	52 509	39 837	22 959	n.p.	n.p.	141 155
September	49 488	40 129	31 128	n.p.	n.p.	149 256
TREND ESTIMATES						
<b>1998</b>						
June	54 835	39 140	22 057	n.p.	n.p.	140 904
September	56 362	38 366	21 607	n.p.	n.p.	140 871
December	56 970	37 964	21 188	n.p.	n.p.	140 412
<b>1999</b>						
March	55 382	38 538	22 428	n.p.	n.p.	141 278
June	52 924	39 453	25 112	n.p.	n.p.	143 689
September	50 497	40 147	28 442	n.p.	n.p.	146 806

(a) For more information refer to paragraphs 8 and 9 of the Explanatory Notes.



## MEAT PRODUCED(a): Original

<i>Financial year</i>	<i>New South Wales</i> tonnes	<i>Victoria</i> tonnes	<i>Queensland</i> tonnes	<i>South Australia</i> tonnes	<i>Western Australia</i> tonnes	<i>Tasmania</i> tonnes	<i>Australia</i> tonnes
<b>BEEF</b>							
<b>1996-1997</b>	471 231	373 818	687 802	85 478	91 369	51 504	<b>1 772 197</b>
<b>1997-1998</b>	473 801	389 086	799 779	80 924	102 482	53 064	<b>1 911 106</b>
<b>1998-1999</b>	437 823	398 675	904 504	62 266	104 979	53 271	<b>1 972 723</b>
<b>VEAL</b>							
<b>1996-1997</b>	16 444	14 293	5 579	514	319	905	<b>38 103</b>
<b>1997-1998</b>	20 821	15 579	5 520	734	312	1 149	<b>44 168</b>
<b>1998-1999</b>	15 632	14 446	5 928	611	436	1 241	<b>38 343</b>
<b>MUTTON</b>							
<b>1996-1997</b>	109 198	55 545	19 646	51 778	52 164	7 820	<b>296 151</b>
<b>1997-1998</b>	119 709	63 470	24 552	58 554	56 442	9 841	<b>332 567</b>
<b>1998-1999</b>	117 405	61 463	26 040	48 029	39 766	8 724	<b>301 427</b>
<b>LAMB</b>							
<b>1996-1997</b>	67 174	111 403	14 348	34 890	35 701	6 765	<b>270 280</b>
<b>1997-1998</b>	69 094	119 973	13 949	38 224	33 581	8 072	<b>282 894</b>
<b>1998-1999</b>	76 879	128 343	14 138	44 172	39 021	9 222	<b>311 776</b>
<b>PIG MEAT</b>							
<b>1996-1997</b>	88 753	99 225	73 809	29 842	38 837	4 832	<b>335 597</b>
<b>1997-1998</b>	95 590	112 504	81 172	28 489	35 499	4 916	<b>358 489</b>
<b>1998-1999</b>	97 185	114 582	84 065	30 864	37 534	5 242	<b>369 862</b>
<b>TOTAL RED MEAT</b>							
<b>1996-1997</b>	752 800	654 284	801 184	202 501	218 389	71 826	<b>2 712 328</b>
<b>1997-1998</b>	779 014	700 612	924 972	206 925	228 317	77 041	<b>2 929 224</b>
<b>1998-1999</b>	744 925	717 507	1 034 675	185 943	221 736	77 700	<b>2 994 131</b>
<b>CHICKEN MEAT</b>							
<b>1996-1997</b>	200 277	121 445	80 485	38 932	46 789	n.p.	<b>487 929</b>
<b>1997-1998</b>	211 603	148 288	88 690	n.p.	n.p.	n.p.	<b>543 804</b>
<b>1998-1999</b>	223 222	153 601	88 086	n.p.	n.p.	n.p.	<b>564 270</b>

(a) For more information refer to paragraphs 5 to 9 of the Explanatory Notes.

## STOCKS OF FROZEN MEAT, Australia(a): Original

<i>At last Saturday of quarter</i>	<i>Beef and Veal</i>	<i>Mutton</i>	<i>Lamb</i>	<i>Pork</i>	<i>Goat</i>	<i>Offal</i>	<i>Total</i>
	<i>tonnes</i>	<i>tonnes</i>	<i>tonnes</i>	<i>tonnes</i>	<i>tonnes</i>	<i>tonnes</i>	<i>tonnes</i>
<b>1998</b>							
March	23 875	5 392	2 556	2 257	379	4 605	<b>39 064</b>
June	23 333	4 459	1 924	3 803	730	4 255	<b>38 504</b>
September	23 495	3 499	2 683	3 084	124	4 298	<b>37 183</b>
December	21 480	4 153	3 803	1 748	77	3 829	<b>35 090</b>
<b>1999</b>							
March	19 811	5 459	2 459	1 550	39	3 525	<b>32 843</b>
June	n.a.	n.a.	n.a.	n.a.	n.a.	n.a.	<b>n.a.</b>

(a) For more information refer to paragraph 10 of the Explanatory Notes.

Source: Department of Agriculture, Fisheries and Forestry (formerly Primary Industries and Energy).

## EXPORTS OF FRESH, FROZEN AND PROCESSED MEAT, Australia(a): Original

Period	FRESH, CHILLED OR FROZEN MEAT.....									PROCESSED MEAT	
	Beef bone -in tonnes	Beef bone -out tonnes	Veal bone -in tonnes	Veal bone -out tonnes	Mutton bone -in tonnes	Mutton bone -out tonnes	Lamb bone -in tonnes	Lamb bone -out tonnes	Pork tonnes	Bacon and ham tonnes	Canned meat tonnes
<b>1996-1997</b>	48 603	692 105	1 172	3 761	92 744	50 834	53 533	8 350	6 674	320	11 728
<b>1997-1998</b>	46 933	795 942	1 800	5 548	107 839	59 130	62 181	8 750	12 276	149	12 900
<b>1998-1999</b>	60 951	836 609	1 614	6 141	114 748	51 359	71 595	9 336	16 510	168	13 056
<b>1998</b>											
June	6 338	211 790	609	1 445	26 020	11 379	16 599	2 267	3 721	25	2 923
September	7 993	223 403	397	2 103	20 880	11 531	15 988	2 322	3 143	104	3 744
December	13 827	223 035	338	1 814	31 326	15 842	20 501	2 301	4 019	27	3 117
<b>1999</b>											
March	20 008	186 648	273	844	32 544	11 489	17 453	2 061	3 355	7	3 337
June	19 122	203 522	606	1 380	29 999	12 496	17 653	2 652	5 992	31	2 857
September	12 924	207 092	356	2 542	20 972	13 417	17 791	2 374	10 316	49	3 013

(a) For more information refer to paragraphs 11 and 12 of the Explanatory Notes.

## EXPORTS OF LIVE SHEEP AND CATTLE, Australia(a): Original

	<i>Number</i>	<i>Gross weight</i>	<i>Gross value</i>	<i>Unit value</i>
<i>Period</i>	'000	'000 tonnes	\$'000	\$
SHEEP				
<b>1996-1997</b>	5 237.2	269.8	189 944	36.27
<b>1997-1998</b>	4 961.1	256.0	193 266	38.96
<b>1998-1999</b>	4 958.7	254.9	181 671	36.64
<b>1998</b>				
June	1 182.5	59.4	48 219	40.78
September	1 005.5	51.6	38 696	38.48
December	1 429.0	75.0	53 106	37.16
<b>1999</b>				
March	1 259.3	64.4	45 473	36.11
June	1 264.9	63.9	44 396	35.10
September	1 086.7	55.8	42 005	38.65
CATTLE				
<b>1996-1997</b>	863.8	313.9	427 721	495.19
<b>1997-1998</b>	694.0	255.4	334 058	481.34
<b>1998-1999</b>	713.0	264.7	342 667	480.57
<b>1998</b>				
June	137.9	49.3	59 687	432.89
September	131.1	46.8	58 907	449.33
December	197.4	74.7	96 865	490.71
<b>1999</b>				
March	196.7	75.9	99 569	506.09
June	187.8	67.2	87 326	464.98
September	220.2	81.6	103 024	467.87

(a) For more information refer to paragraph 13 of the Explanatory Notes.

## WHOLE MILK INTAKE, By Factories(a): All Series

	<i>New South Wales</i>	<i>Victoria</i>	<i>Queensland</i>	<i>South Australia</i>	<i>Western Australia</i>	<i>Tasmania</i>	<i>Australia</i>
<i>Quarter</i>	<i>ML</i>	<i>ML</i>	<i>ML</i>	<i>ML</i>	<i>ML</i>	<i>ML</i>	<i>ML</i>
ORIGINAL							
<b>1998</b>							
March	296	1 417	197	134	89	146	2 280
June	278	837	191	128	100	73	1 606
September	324	1 430	221	155	109	93	2 332
December	359	2 382	222	195	103	240	3 501
<b>1999</b>							
March	310	1 605	198	150	95	171	2 529
June	293	997	185	143	97	99	1 814
SEASONALLY ADJUSTED							
<b>1998</b>							
March	302	1 430	198	149	97	130	2 306
June	310	1 510	209	153	103	125	2 410
September	323	1 585	218	149	100	151	2 526
December	320	1 532	207	160	101	143	2 463
<b>1999</b>							
March	317	1 623	199	166	103	152	2 560
June	327	1 796	203	171	100	170	2 767
TREND ESTIMATES							
<b>1998</b>							
March	309	1 469	204	148	98	132	2 360
June	312	1 501	208	151	100	134	2 406
September	317	1 535	211	153	101	139	2 456
December	320	1 581	208	159	101	148	2 517
<b>1999</b>							
March	321	1 649	203	165	101	156	2 595
June	323	1 729	200	171	101	162	2 686

(a) For more information refer to paragraph 14 of the Explanatory Notes.

Source: Original series data from Australian Dairy Corporation.

## MARKET MILK SALES, By Factories(a): All Series

	<i>New South Wales</i>	<i>Victoria</i>	<i>Queensland</i>	<i>South Australia</i>	<i>Western Australia</i>	<i>Tasmania</i>	<i>Australia</i>
<i>Quarter</i>	<i>ML</i>	<i>ML</i>	<i>ML</i>	<i>ML</i>	<i>ML</i>	<i>ML</i>	<i>ML</i>
ORIGINAL							
<b>1998</b>							
March	141	107	93	45	47	12	445
June	146	112	96	47	48	12	461
September	149	115	97	47	48	12	468
December	145	109	96	47	48	12	457
<b>1999</b>							
March	140	105	94	45	47	12	444
June	144	113	95	46	48	12	458
SEASONALLY ADJUSTED							
<b>1998</b>							
March	144	110	94	45	47	12	453
June	144	110	96	47	48	12	456
September	148	114	95	47	48	12	464
December	145	109	96	46	48	12	457
<b>1999</b>							
March	144	108	96	46	47	12	453
June	142	111	95	46	48	12	453
TREND ESTIMATES							
<b>1998</b>							
March	147	111	95	46	47	12	457
June	145	111	95	47	48	12	458
September	146	111	96	47	48	12	459
December	145	110	96	46	48	12	458
<b>1999</b>							
March	144	109	96	46	48	12	455
June	142	109	96	46	47	12	452

(a) For more information refer to paragraph 14 of the Explanatory Notes.

Source: Original series data from Australian Dairy Corporation.

## BROKERS AND DEALERS RECEIVALS OF TAXABLE WOOL(a): All Series

Quarter	New South Wales	Victoria	Queensland	South Australia	Western Australia	Tasmania	Australia	% of total received by brokers
	tonnes	tonnes	tonnes	tonnes	tonnes	tonnes	tonnes	%
ORIGINAL								
<b>1998</b>								
June	34 050	20 312	12 049	13 926	22 939	3 056	<b>106 331</b>	80.2
September	50 293	39 657	14 201	26 502	38 745	4 187	<b>173 586</b>	82.3
December	52 584	55 505	11 539	25 233	40 644	5 705	<b>191 209</b>	82.7
<b>1999</b>								
March	44 586	29 805	10 312	18 374	39 168	2 953	<b>145 197</b>	81.7
June	39 579	25 878	10 936	15 593	23 668	3 360	<b>119 013</b>	75.1
September	49 325	36 894	15 001	25 275	36 657	4 922	<b>168 074</b>	84.2
SEASONALLY ADJUSTED								
<b>1998</b>								
June	45 140	36 345	10 923	20 990	35 884	4 012	<b>153 295</b>	..
September	41 548	37 118	10 822	21 704	32 398	4 080	<b>147 670</b>	..
December	44 619	34 798	16 318	19 710	36 961	3 820	<b>156 226</b>	..
<b>1999</b>								
March	52 315	38 741	11 795	22 531	36 510	4 166	<b>166 057</b>	..
June	51 772	45 292	9 900	22 741	36 929	4 378	<b>171 012</b>	..
September	40 794	34 545	11 437	20 878	30 924	4 769	<b>143 347</b>	..
TREND ESTIMATES								
<b>1998</b>								
June	42 896	35 975	11 416	20 860	35 780	4 061	<b>150 988</b>	..
September	43 334	35 595	12 588	20 730	34 592	3 971	<b>150 810</b>	..
December	46 757	37 343	13 235	21 289	35 703	3 942	<b>158 267</b>	..
<b>1999</b>								
March	49 294	39 262	12 561	21 745	36 383	4 030	<b>163 275</b>	..
June	48 863	40 051	11 256	22 009	35 324	4 238	<b>161 741</b>	..
September	45 904	39 287	10 195	21 906	33 222	4 462	<b>154 976</b>	..

(a) For more information refer to paragraphs 15 and 16 of the Explanatory Notes.

## LIVESTOCK PRODUCTS: Original

<i>Financial year</i>	<i>New South Wales</i>	<i>Victoria</i>	<i>Queensland</i>	<i>South Australia</i>	<i>Western Australia</i>	<i>Tasmania</i>	<i>Australia</i>
-----------------------	------------------------	-----------------	-------------------	------------------------	--------------------------	-----------------	------------------

.....

WHOLE MILK INTAKE BY FACTORIES (ML)(a)

<b>1996-1997</b>	1 192	5 622	797	535	349	529	<b>9 024</b>
<b>1997-1998</b>	1 242	5 866	822	580	386	543	<b>9 438</b>
<b>1998-1999</b>	1 286	6 414	827	643	403	603	<b>10 175</b>

.....

MARKET MILK SALES BY FACTORIES (ML)(a)

<b>1996-1997</b>	576	452	376	173	193	50	<b>1 820</b>
<b>1997-1998</b>	591	442	379	182	190	49	<b>1 833</b>
<b>1998-1999</b>	578	442	382	185	191	48	<b>1 827</b>

.....

BROKERS AND DEALERS RECEIVALS OF TAXABLE WOOL (Tonnes)(a)

<b>1996-1997</b>	195 338	174 420	46 186	88 926	159 759	19 174	<b>683 803</b>
<b>1997-1998</b>	182 939	151 206	45 736	85 837	153 664	17 448	<b>636 830</b>
<b>1998-1999</b>	187 042	150 844	46 988	85 702	142 224	16 205	<b>629 005</b>

.....

(a) For more information refer to paragraphs 14 to 16 of the Explanatory Notes.

Source: Original series data from Australian Dairy Corporation.



# WHAT IF...? REVISIONS TO TREND ESTIMATES

## EFFECT OF NEW SEASONALLY ADJUSTED ESTIMATES ON TREND ESTIMATES

Each time new seasonally adjusted estimates become available, trend estimates are revised (see paragraph 21 of the Explanatory Notes).

### TREND REVISIONS

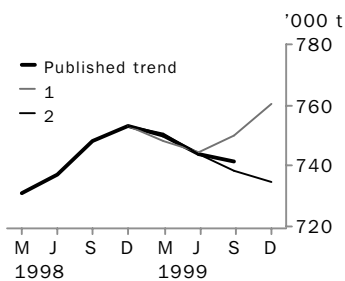
The graphs and tables which follow present the effect of two possible new seasonally adjusted estimates on the previous trend estimates:

**1** The December Quarter 1999 seasonally adjusted estimate is higher than the September Quarter 1999 estimate by the percentage shown.

**2** The December Quarter 1999 seasonally adjusted estimate is lower than the September Quarter 1999 estimate by the percentage shown.

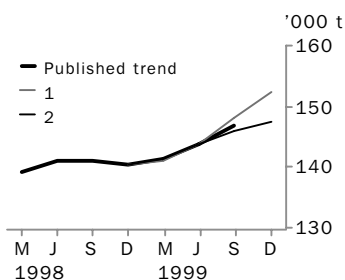
These percentages were chosen because they represent the average absolute quarterly percentage change for these series over the last ten years.

### RED MEAT PRODUCTION



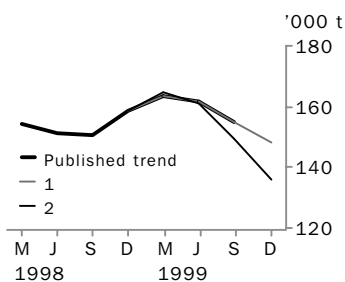
	TREND AS PUBLISHED		WHAT IF NEXT QUARTER'S SEASONALLY ADJUSTED ESTIMATE:			
	number	% change	<b>1</b> <i>rises by 3% on Sep Qtr 1999</i>		<b>2</b> <i>falls by 3% on Sep Qtr 1999</i>	
	number	% change	number	% change	number	% change
Sep Qtr 1998	748 247	1.5	748 247	1.5	748 247	1.5
Dec Qtr 1998	753 151	0.7	753 150	0.7	753 150	0.7
Mar Qtr 1999	749 703	-0.5	748 466	-0.6	750 844	-0.3
Jun Qtr 1999	743 875	-0.8	744 525	-0.5	743 610	-1.0
Sep Qtr 1999	741 614	-0.3	750 153	0.8	738 657	-0.7
Dec Qtr 1999	—	—	760 503	1.4	734 971	-0.5

### CHICKEN MEAT PRODUCTION



	TREND AS PUBLISHED		WHAT IF NEXT QUARTER'S SEASONALLY ADJUSTED ESTIMATE:			
	number	% change	<b>1</b> <i>rises by 4% on Sep Qtr 1999</i>		<b>2</b> <i>falls by 4% on Sep Qtr 1999</i>	
	number	% change	number	% change	number	% change
Sep Qtr 1998	140 871	0.0	140 871	0.0	140 871	0.0
Dec Qtr 1998	140 412	-0.3	140 411	-0.3	140 411	-0.3
Mar Qtr 1999	141 278	0.6	140 893	0.3	141 332	0.7
Jun Qtr 1999	143 689	1.7	143 789	2.1	143 637	1.6
Sep Qtr 1999	146 806	2.2	147 996	2.9	145 888	1.6
Dec Qtr 1999	—	—	152 316	2.9	147 315	1.0

### WOOL RECEIVALS



	TREND AS PUBLISHED		WHAT IF NEXT QUARTER'S SEASONALLY ADJUSTED ESTIMATE:			
	number	% change	<b>1</b> <i>rises by 9% on Sep Qtr 1999</i>		<b>2</b> <i>falls by 9% on Sep Qtr 1999</i>	
	number	% change	number	% change	number	% change
Sep Qtr 1998	150 810	-0.1	150 810	-0.1	150 810	-0.1
Dec Qtr 1998	158 267	4.9	158 267	4.9	158 267	4.9
Mar Qtr 1999	163 275	3.2	163 642	3.4	164 703	4.1
Jun Qtr 1999	161 741	-0.9	161 605	-1.2	161 219	-2.1
Sep Qtr 1999	154 976	-4.2	154 740	-4.2	149 626	-7.2
Dec Qtr 1999	—	—	147 909	-4.4	136 146	-9.0

# WHAT IF...? REVISIONS TO TREND ESTIMATES

## EFFECT OF NEW SEASONALLY ADJUSTED ESTIMATES ON TREND ESTIMATES

Readers should exercise care when interpreting trend estimates. The last three trend estimates, in particular, are likely to be revised when new seasonally adjusted estimates become available.

### TREND REVISIONS

The graph and tables which follow present the effect of two possible scenarios on the previous trend estimates:

**1** The September Quarter 1999 seasonally adjusted estimate is higher than the June Quarter 1999 estimate by:

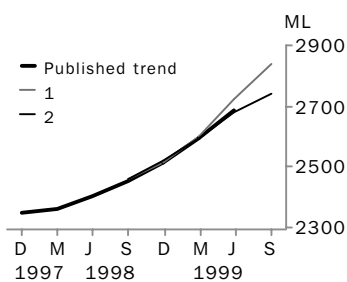
- +2% for whole milk intake by factories.

**2** The September Quarter 1999 seasonally adjusted estimate is lower than the June Quarter 1999 estimate by:

- 2% for whole milk intake by factories.

These percentages were chosen because they represent the average absolute quarterly percentage change for these series over the last ten years.

### WHOLE MILK INTAKE BY FACTORIES



	TREND AS PUBLISHED		WHAT IF NEXT QUARTER'S SEASONALLY ADJUSTED ESTIMATE:			
	number	% change	<b>1</b> <i>rises by 2% on Jun Qtr 1999</i>		<b>2</b> <i>falls by 2% on Jun Qtr 1999</i>	
	number	% change	number	% change	number	% change
Jun Qtr 1998	2 406	1.9	2 407	1.9	2 407	1.9
Sep Qtr 1998	2 456	2.1	2 458	2.1	2 458	2.1
Dec Qtr 1998	2 517	2.5	2 512	2.2	2 520	2.5
Mar Qtr 1999	2 595	3.1	2 598	3.4	2 595	3.0
Jun Qtr 1999	2 686	3.5	2 720	4.7	2 677	3.2
Sep Qtr 1999	—	—	2 836	4.3	2 742	2.4

## EXPLANATORY NOTES

### INTRODUCTION

- 1** This publication contains information on livestock slaughterings, meat production, stocks of frozen meat, exports of live sheep and live cattle, exports of fresh, frozen and processed meat, and whole milk intake by factories, market milk sales by factories and receipts of taxable wool by wool brokers and dealers.
- 2** The figures shown in this publication have been revised where necessary and as a consequence may not agree with similar data shown in previous publications.
- 3** Where figures have been rounded, discrepancies may occur between sums of the component items and totals.
- 4** Unless indicated otherwise, Australian totals include data for all States and both Territories.

### LIVESTOCK SLAUGHTERINGS AND MEAT PRODUCTION

- 5** The statistics on slaughterings and meat production are based on a monthly collection from abattoirs and other major slaughtering establishments and include estimates of animals slaughtered on farms and by country butchers and other small slaughtering establishments.
- 6** Livestock slaughterings in the Australian Capital Territory and the Northern Territory and the respective meat produced, are included in the Australian totals in tables 1–9 and 11–17. Cattle slaughterings include domesticated buffaloes. Red meat is shown in carcass weight and excludes offal.
- 7** Care should be taken when using this information as the figures only relate to slaughterings for human consumption and do not include animals condemned or those killed for boiling down.
- 8** Poultry slaughterings and meat produced statistics have been compiled from returns supplied by commercial poultry slaughtering establishments and comprise boilers, fryers and roasters. Many small producers are excluded from the collection; however, the statistics represent a high level of coverage. Tasmanian data are excluded from the Australian total.
- 9** Chicken meat is shown in dressed weight of whole birds, pieces and giblets. Some slaughterings and meat production statistics for ‘Ducks and Drakes’ and ‘Other Fowls and Turkeys’ are available by contacting the ABS on Hobart 03 6222 5844 or by writing to GPO Box 66a, Hobart TAS 7001 (Attention: Agriculture Section).

### STOCKS OF FROZEN MEAT

- 10** Table 20 shows stocks of frozen meat held in cold stores registered to handle meat for export and includes meat passed for export, canning and other purposes. It also includes boneless and carcass meat. Buffalo meat is included in beef (Source: Department of Agriculture, Fisheries and Forestry (formerly Primary Industries and Energy)).

### EXPORTS OF FRESH, FROZEN AND PROCESSED MEAT

- 11** Table 21 shows exports of fresh, frozen and processed meat, excluding offal. Factors can be applied to beef, veal, mutton and lamb bone-out figures to derive bone-in carcass weight which, when added to bone-in figures, shows total exports in carcass weight. The factor for beef and veal is 1.5 and for mutton and lamb, 2.0 (Source: Department of Agriculture, Fisheries and Forestry (formerly Primary Industries and Energy)).
- 12** Beef also includes buffalo meat. Bacon and ham shown is the cured carcass weight of smoked or cooked bacon and ham. It also includes the stated net weight of packs of canned bacon and ham. Canned meat is shown as the canned weight and excludes canned bacon and ham.

## EXPLANATORY NOTES

LIVE SHEEP AND CATTLE EXPORTS	<p><b>13</b> Table 22 contains statistics of the number of live sheep and cattle exported, the gross weight, gross value and unit value. The unit value is obtained by dividing the gross value by the number of animals exported. Sheep and cattle exported for breeding are excluded.</p>
MILK	<p><b>14</b> Tables 2, 23, 24 and 26 contain statistics collected by the Australian Dairy Corporation (ADC). Whole milk intake by factories includes the whole milk equivalent of farm cream intake. Market milk sales includes white, flavoured, high and low fat milk and uht milk.</p>
WOOL RECEIVALS	<p><b>15</b> The statistics in Tables 2, 25 and 26 show the amount of taxable wool received by brokers and purchased by dealers from wool producers. It excludes wool received by brokers on which tax has already been paid by other dealers (private buyers) or brokers.</p> <p><b>16</b> The information shown is on the basis of the State in which wool has actually been received and does not necessarily reflect the production of wool in that State.</p>
SEASONAL ADJUSTMENT	<p><b>17</b> Seasonal adjustment is a means of removing the estimated effects of normal seasonal variation from the series so that the effects of other influences can be more clearly recognised.</p> <p><b>18</b> In the seasonal adjustment of the livestock estimates, account has been taken of both normal seasonal factors and 'trading-day' effects, where significant, (arising from the varying length of each quarter and the varying numbers of Sundays, Mondays, Tuesdays etc. in the quarter). Adjustments are also made for the effects of change in the date of Easter holidays, again, where significant. Seasonal adjustment does not remove from the series the effect of irregular influences (e.g. abnormal weather, industrial disputes).</p> <p><b>19</b> The State component series have been seasonally adjusted independently. Therefore, the adjusted components may not add to the Australian Group totals.</p> <p><b>20</b> As happens with all seasonally adjusted series, the seasonal factors are reviewed annually to take account of each additional year's data.</p>
TREND ESTIMATES	<p><b>21</b> A trend estimate is obtained by reducing the irregular component from the seasonally adjusted series. In this publication trend estimates are generally derived by applying a seven term Henderson moving average to the seasonally adjusted series. The seven term Henderson, (like all Henderson averages) is symmetric, but as the end of a time series is approached, asymmetric forms of the average are applied. Unlike the weights of the standard seven term Henderson moving average, the weights employed here have been tailored to suit the particular characteristics of individual series. While the asymmetric weights enable the trend to be calculated for recent quarters, it does result in revisions to the estimates for the most recent three quarters as additional observations become available. Revisions of trend estimates will also occur with revisions to the original data and re-estimation of seasonal factors.</p> <p><b>22</b> Sensitivity analysis indicates the potential magnitude and direction of revisions created to the last three estimates. It aims to show how a specified movement in the seasonally adjusted data in the next period will affect the trend path of the time series. By showing how sensitive the trend estimates are to the addition of new data, the analysis provides information which can be used in the assessment of the trend's stability.</p>

## EXPLANATORY NOTES

---

	<p><b>23</b> For further information, see <i>A Guide to Interpreting Time Series—Monitoring ‘Trends’, an Overview</i> (Cat. no. 1348.0) or contact the Assistant Director, Time Series Analysis on 02 6252 6345.</p>												
RELATED PUBLICATIONS	<p><b>24</b> Current publications produced by the ABS are listed in the <i>Catalogue of Publications and Products, Australia</i> (Cat. no. 1101.0). The ABS also issues, on Tuesdays and Fridays, a Release Advice (Cat. no. 1105.0) which lists publications to be released in the next few days. The Catalogue and Release Advice are available from any ABS office.</p>												
GENERAL ACKNOWLEDGMENT	<p>ABS publications draw extensively on information provided freely by individuals, businesses, governments and other organisations. Their continued cooperation is very much appreciated. Without it, the wide range of statistics published by the ABS would not be available. Information received by the ABS is treated in strict confidence as required by the <i>Census and Statistics Act 1905</i>.</p>												
SYMBOLS AND OTHER USAGES	<table><tr><td>billion</td><td>thousand million</td></tr><tr><td>ML</td><td>million litres</td></tr><tr><td>n.a.</td><td>not available</td></tr><tr><td>n.p.</td><td>not published</td></tr><tr><td>t</td><td>tonnes</td></tr><tr><td>. .</td><td>not applicable</td></tr></table>	billion	thousand million	ML	million litres	n.a.	not available	n.p.	not published	t	tonnes	. .	not applicable
billion	thousand million												
ML	million litres												
n.a.	not available												
n.p.	not published												
t	tonnes												
. .	not applicable												

## SELF-HELP ACCESS TO STATISTICS

- CPI INFOLINE* For current and historical Consumer Price Index data, call 1902 981 074 (call cost 75c per minute).
- DIAL-A-STATISTIC* For the latest figures for National Accounts, Balance of Payments, Labour Force, Average Weekly Earnings, Estimated Resident Population and the Consumer Price Index call 1900 986 400 (call cost 75c per minute).
- INTERNET* [www.abs.gov.au](http://www.abs.gov.au)
- LIBRARY* A range of ABS publications is available from public and tertiary libraries Australia-wide. Contact your nearest library to determine whether it has the ABS statistics you require.

## WHY NOT SUBSCRIBE?

- PHONE* +61 1300 366 323
- FAX* +61 03 9615 7848

## CONSULTANCY SERVICES

ABS offers consultancy services on a user pays basis to help you access published and unpublished data. Data that is already published and can be provided within 5 minutes is free of charge. Statistical methodological services are also available. Please contact:

<i>INQUIRIES</i>	<i>City</i>	<i>By phone</i>	<i>By fax</i>
	Canberra	02 6252 6627	02 6207 0282
	Sydney	02 9268 4611	02 9268 4668
	Melbourne	03 9615 7755	03 9615 7798
	Brisbane	07 3222 6351	07 3222 6283
	Perth	08 9360 5140	08 9360 5955
	Adelaide	08 8237 7400	08 8237 7566
	Hobart	03 6222 5800	03 6222 5995
	Darwin	08 8943 2111	08 8981 1218

*POST* Client Services, ABS, PO Box 10, Belconnen ACT 2616

*EMAIL* [client.services@abs.gov.au](mailto:client.services@abs.gov.au)



2721500009994  
ISSN 0728-4047

RRP \$17.50